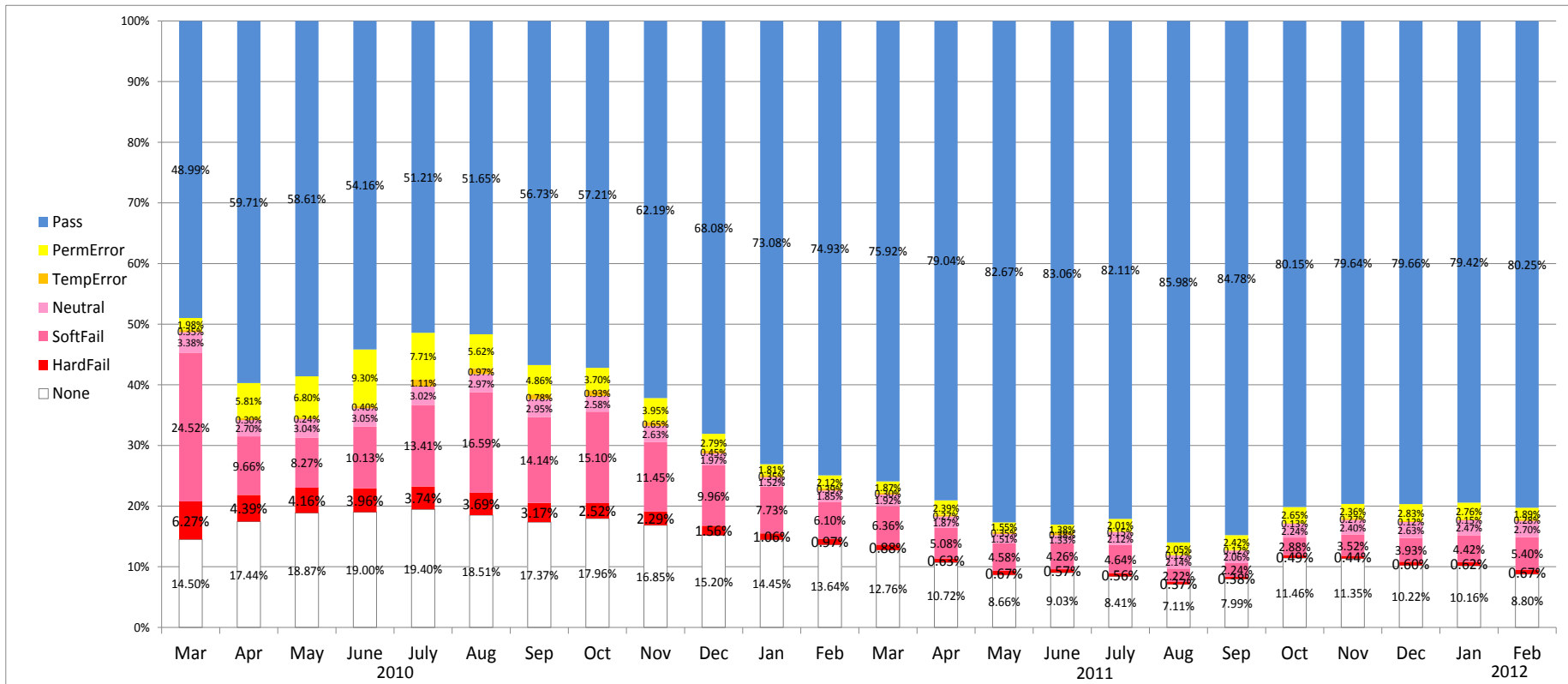


# The situation of Sender Policy Framework(SPF) in Japan

(※In the E-mail which is circulating)

	2010											2011											2012	
	Mar	Apr	May	June	July	Aug	Sep	Oct	Nov	Dec	Jan	Feb	Mar	Apr	May	June	July	Aug	Sep	Oct	Nov	Dec	Jan	Feb
The number of data providers	5	5	6	6	6	6	6	7	7	7	7	7	7	7	7	7	7	7	7	7	7	7	7	7
the ratio of SPF																								
① None	14.50%	17.44%	18.87%	19.00%	19.40%	18.51%	17.37%	17.96%	16.85%	15.20%	14.45%	13.64%	12.76%	10.72%	8.66%	9.03%	8.41%	7.11%	7.99%	11.46%	11.35%	10.22%	10.16%	8.80%
② Neutral	3.38%	2.70%	3.04%	3.05%	3.02%	2.97%	2.95%	2.58%	1.97%	1.52%	1.52%	1.85%	1.92%	1.87%	1.51%	1.33%	2.12%	2.14%	2.06%	2.24%	2.40%	2.63%	2.47%	2.70%
③ Pass	48.99%	59.71%	58.61%	54.16%	51.21%	51.65%	56.73%	57.21%	62.19%	68.08%	73.08%	74.93%	75.92%	79.04%	82.67%	83.06%	82.11%	85.98%	84.78%	80.15%	79.64%	79.66%	79.42%	80.25%
④ HardFail	6.27%	4.39%	4.16%	3.96%	3.74%	3.69%	3.17%	2.52%	2.29%	1.56%	1.06%	0.97%	0.88%	0.63%	0.67%	0.57%	0.56%	0.37%	0.38%	0.49%	0.44%	0.60%	0.62%	0.67%
⑤ SoftFail	24.52%	9.66%	8.27%	10.13%	13.41%	16.59%	14.14%	15.10%	11.45%	9.96%	7.73%	6.10%	6.36%	5.08%	4.58%	4.26%	4.64%	2.22%	2.24%	2.88%	3.52%	3.93%	4.42%	5.40%
⑥ TempError	0.35%	0.30%	0.24%	0.40%	1.11%	0.97%	0.78%	0.93%	0.65%	0.45%	0.35%	0.39%	0.30%	0.27%	0.35%	0.38%	0.15%	0.12%	0.12%	0.13%	0.27%	0.12%	0.15%	0.28%
⑦ PermError	1.98%	5.81%	6.80%	9.30%	7.71%	5.62%	4.86%	3.70%	3.95%	2.79%	1.81%	2.12%	1.87%	2.39%	1.55%	1.38%	2.01%	2.05%	2.42%	2.65%	2.36%	2.83%	2.76%	1.89%



Source: Ministry of Internal Affairs and Communications